

INFORMATION FOR VISITORS

BASIC ON-SITE SAFETY RULES AT ALUPROF SA FACILITIES



📍 Bielsko-Biala facility



📍 Opole facility



📍 Ogrodzona facility



📍 Goleiszów facility



📍 Międzyrzecze facility



📍 Złotów facility

GENERAL RULES



Visitors to the shop floor and warehouse should always be accompanied by an ALUPROF SA staff member.



People under the influence of alcohol or narcotics will be refused entry to the site.



Smoking and vaping is forbidden throughout the facility and grounds.



Using the following devices is prohibited while visiting the facility: cameras, voice recorders, video cameras and other electronic devices.



download the leaflet

MOVING AROUND THE FACILITY



Vehicles may only be parked in designated areas.



The following speed limits apply on site:
– 10 km/h on the shop floor;
– 20 km/h elsewhere.



Protective clothing (waistcoats) should be worn on the shop floor and in the warehouses. Personal protective equipment should be used as recommended by an ALUPROF SA staff member.



All foot traffic should keep to the designated routes. Where no pedestrian route is marked out, keep to the right-hand side of the transport route.



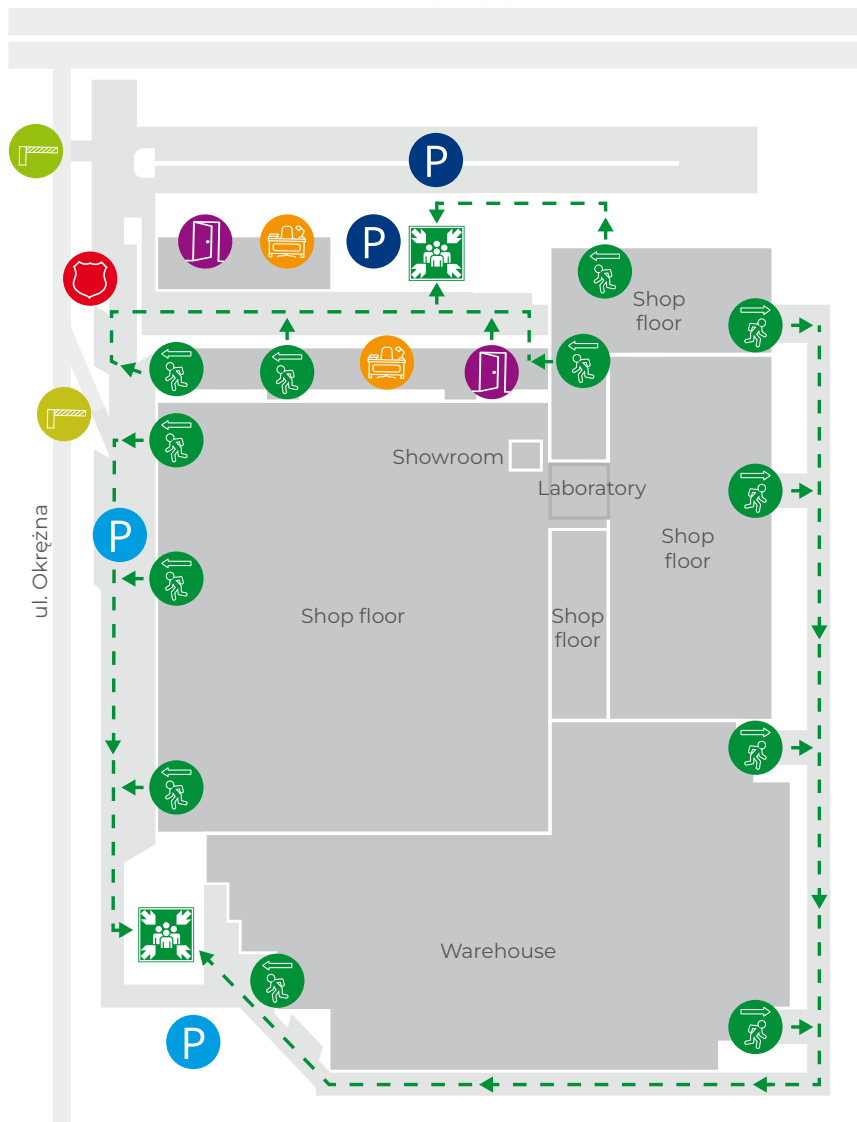
Particular care should be taken when moving around the facility. Please be aware of moving transport: forklift trucks and gantries.



Walking and/or standing under a load while it is being moved is prohibited.

www.aluprof.com

ul. Warszawska












**EMERGENCY
PHONE NUMBER**

112

SITE SECURITY

+48 33 819 52 11

LEGEND

-  Visitors' car park
-  Parking for deliveries
-  Office
-  Main gate
-  Deliveries gate
-  Entrance to building
-  Emergency exit
-  Assembly point
-  Security

EVACUATION



When you hear an alarm or emergency message, please start evacuating.



Do exactly what the staff and emergency services instruct you to do.



Leave the building via the nearest available emergency exit.



Please don't run. Stay calm.



Please help people who are in immediate danger to leave the building.



In the event of smoke, stay close to the floor as you move towards the exit.

THE FACILITY'S INTERNAL ROUTES MUST BE USED

**PLEASE EXERCISE CAUTION
AND FOLLOW THESE RIGHT-OF-WAY SIGNS:**



VEHICLE RIGHT OF WAY

A route for vehicles (power-driven forklift trucks, handoperated trucks, material carriers and similar)



PEDESTRIAN RIGHT OF WAY

A route for pedestrians (absolute right of way)



PEDESTRIAN ROUTES AND PATHS: exercise caution: **VEHICLE RIGHT OF WAY**



GIVE WAY

(applies to pedestrians and vehicles)



PEDESTRIAN TRAFFIC ZONE

(foot traffic is only allowed between the blue lines)



NO PEDESTRIANS